

Opposite Adjectives



open/closed



heavy/light



dry/wet



cold/hot



hard/soft



fat/thin



tall/short



strong/weak



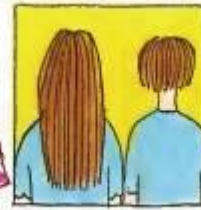
tidy/untidy



young/old



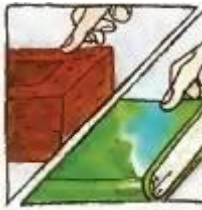
beautiful/ugly



long/short



curly/straight



rough/smooth



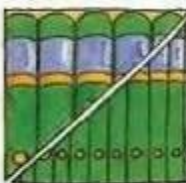
handsome/ ugly



quiet/noisy



narrow/wide



thick/thin



big/small



fancy / plain



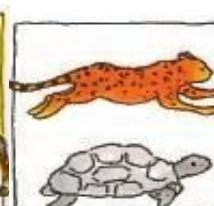
married / single



empty/full



alive/dead



fast/slow



bitter/sweet



light/dark



old/new



blunt/sharp



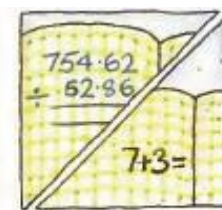
clean/dirty



rich / poor



cheap/expensive



difficult/easy



good / bad



high / low